

ATLAS Teamwork



Masters of all situations.

- **ATLAS** wheel loaders, tools and attachments
- **ATLAS** compaction rollers

ATLAS
WEYHAUSEN

ATLAS Teamwork:



Table of contents

	Page
ATLAS wheel loaders	4 – 32
ATLAS tools and attachments for wheel loaders	33 – 40
ATLAS tires	41 – 42
ATLAS compaction rollers	43 – 62



ATLAS wheel loaders: Powerful partners that help you achieve more.



For more than 30 years, ATLAS wheel loaders from Wildeshausen have stuck up for maximum performance. Today, 12 different types with bucket capacities ranging from 0.34 m³ to 1.6 m³ and engine powers from 33.5 hp (24.6 kW) to 125 hp (92 kW) keep setting new standards for an ever-growing scope of application, thanks to their efficiency and safety, their cost-effectiveness and versatility. Among them, you will surely find just the right partner for your individual needs.

- **A wide range of applications**
- **Latest technology**
- **Exceptional reliability**
- **Low maintenance – high user-friendliness**



Technical highlights.

Hydraulic quick-change attachment

By allowing you to change the wheel loader's attachments in a few seconds, it turns the vehicle into an all-rounder.



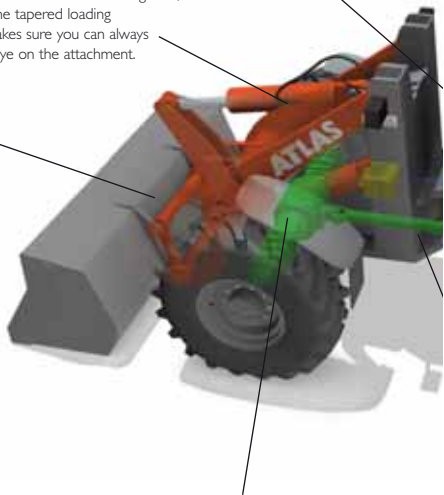
Thanks to their low center of gravity, ATLAS wheel loaders are secured against tipping, even under extreme circumstances.

Lifting unit

The proven and tested ATLAS kinematics with its exceptional tear-out force and excellent lifting heights. The tapered loading rocker makes sure you can always keep an eye on the attachment.

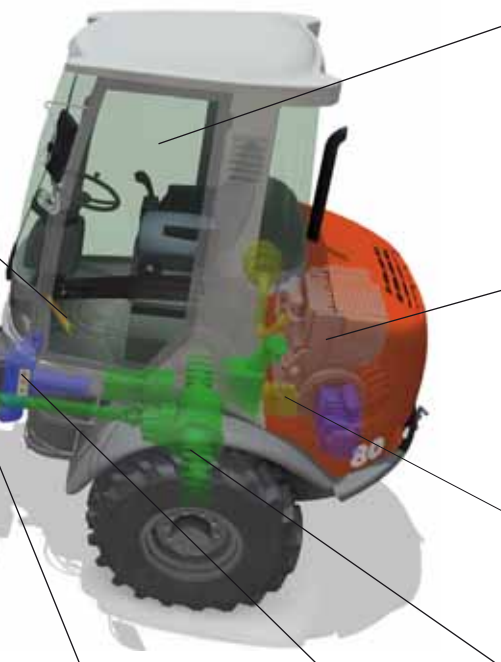
Separate inching pedal

Less wear & tear and fuel consumption: In contrast to the conventional combined brake/inching pedal, with the separate inching pedal, the risk of inadvertently activating the main brake while you drive is eliminated.



Axles

Rigid axles with planet gear reduction and part-time 100% differential lock ensure powerful propulsion, excellent traction, negligible abrasion of the tires and a technique that goes easy on the soil.



Comfortable cabin

In addition to the excellent circumferential visibility in the wheel loader; its clearly arranged controls and its ergonomic design, the individually adjustable steering column and driver's seat and the left and right control panels fitted with a joystick are further features that contribute to the driver's safety and serve to prevent tiredness.

Engine compartment

The engine hood has been designed to open widely in order to establish easy-to-reach service points. Modern, low-emission engines offer power reserves for challenging operations. The filling pieces have been installed under the engine hood and are thus protected against vandalism.

Hydraulic drive unit

All four wheels are hydraulically operated and equipped with a load limit sensing control, which ensures an excellent force closure between the diesel engine and the drive unit.

Negative brake

Serves to maintain a stable position while the wheel loader is driven at slopes with the brake or inching function activated. All four wheels are automatically blocked as soon as the engine is stopped.

Articulated pendulum joint

Provides for excellent maneuverability and cross-country mobility. Even on challenging terrain, the low center of gravity ensures exceptional stability.

User-friendliness

Low maintenance and quick, easy servicing is achieved by central, consolidated, easy-to-reach service points.

The highlights in detail.

Powerful drive unit

ATLAS wheel loaders are equipped with state-of-the-art engines which combine high power reserves for challenging operations with up-to-date low emission values. The hydraulically operated drive unit, which is equipped with a load limit sensing control, affects all four wheels and serves to establish an excellent force closure between the diesel engine and the drive unit. Rigid axles with planet gear reduction in the wheel hubs and the part-time 100% differential lock ensure powerful propulsion, excellent traction, negligible abrasion of the tires and a technique that goes easy on the soil.



Latest kinematics technology

The ATLAS Z-kinematics is characterized by high tear-out forces and excellent lifting heights. The exceptional parallel tracking is the perfect basis for the use of pallet forks. Lowering the lifting unit with a bucket attached to it causes the bucket to automatically go back to the idle position. Thanks to the tapered loading rocker, an excellent view of the attachments and the wheel loader's surroundings is always ensured, even under challenging circumstances.





Separate inching pedal

ATLAS is the only manufacturer that offers a separate inching pedal. In contrast to conventional combined brake/inching pedals, with a separate inching pedal, the danger of driving against the service brake is banned. A generously dimensioned inching area enables the driver to fine-tune the distribution of the shearing load and the lifting force. As a result, there is less wear and tear and the fuel consumption is considerably reduced.



Articulated pendulum joint

Tough, low-maintenance articulated pendulum joints which pivot at an angle of ± 12 degrees in the rear end and an angle of 40 degrees on both sides ensure excellent cross-country mobility, extreme maneuverability and a technique that goes easy on the soil. The front and the rear end always run safely in one track.

Negative brake

This closed brake system (multiple disc brake in an oil bath) makes sure the wheel loader maintains a safe position while the brake or inching function is activated and the vehicle is being driven on a slope. As soon as the engine stops, all four wheels are automatically blocked. The multiple disc brake runs in an oil bath, which considerably reduces its wear and need for maintenance.



Easy maintenance

The engine hood has been designed to open widely in order to provide easy access to all areas that are relevant to the wheel loader's maintenance and servicing needs. With the engine hood closed, the vehicle is effectively secured against vandalism. The greasing points – often a particularly problematic issue – have been consolidated and installed in easy-to-reach areas.





Hydraulic quick-change attachment

Whether a bucket, pallet forks or a road sweeper – with the hydraulic quick-change attachment, it takes just a few seconds to change the wheel loader's implements. This standard feature turns the vehicle into an all-rounder. In order to use hydraulic attachments, the third section is proportionally adjustable. Thanks to a wide range of additional optional equipment, all ATLAS wheel loaders can be adapted to a large variety of individual needs. Fields of application like recycling or the use of hydraulically operated attachments do not cause any problems.



Excellent circumferential visibility

An unobstructed view from the cabin makes sure the driver can always see the location points of the attachments, which considerably facilitates changing the attachments.

ROPS panoramic cabin*

Whether driving forwards or backwards, the ROPS panoramic cabin of our ATLAS wheel loaders offers excellent circumferential visibility in any situation. The steering column and the driver's seat are individually adjustable, which also applies to the left and the right arm consoles with the joystick. These features, in conjunction with the ergonomic arrangement of the operating elements, serve to ensure safe operation and to prevent tiredness. It goes without saying that the panoramic cabin can be easily accessed from both sides of the wheel loader.



Joystick with curling wheel

As a convenient addition to the proportional adjustment of the third section, the joystick is equipped with a potentiometer. Thus, the additional functions of hydraulic attachments can be directly operated by means of the joystick. A second lever is not necessary.



*FOPS variant available as an optional feature



Standard dashboard

It keeps the driver informed of all the important data related to the operation of the wheel loader (such as fuel gauge, engine hour meter, charging warning lamp, oil pressure and oil temperature control lamp) at all times.



ATLAS diagnostic system (ADS)

The ATLAS diagnostic system offers a wide range of additional control features and the supervision of further machine parameters, among them the activation of the high-speed option, the supervision of service parameters and individual settings. The ADS is equipped with an integrated electronic immobilizer (anti-theft device).

AR 35

Engine

Make: Perkins Diesel engine 403D-15
 Power***: set to 24.6 kW (33.5 hp) at 2800 min⁻¹

Drive

- Hydrostatic drive
- Acting on all 4 wheels
- 1st and 2nd hydraulic gear can be engaged under load, forward/backward travel also

Axles

Rigid axles with planetary reduction gears in wheel hubs. 45% - differential lock in front axle.

Brakes

Standard brake: Drum brake on front axle via cardan acting on all 4 wheels. Supplementary brake functions via inching pedal and hydrostatic drive acting on all 4 wheels.

Parking brake: Drum brake via funicular link acting on all 4 wheels with engine switched off.

Steering

- Fully hydraulic center pivot steering
- Steering angle of 40° to each side, ±12° angular movement at rear of vehicle
- Operating pressure of steering hydraulics 145 bar

Hydraulic system

- 3rd steering section for loading hydraulics mechanically controlled by ATLAS joystick, including float position
- Operating pressure 230 bar
 Delivery of pump 31 l/min

Loading equipment

- Powerful and solid Z-kinematics with high tear-out force
- Hydraulic quick-change device
- Parallel movement while using pallet forks
- Automatic shovel return to excavation position



Also available with cabin

Tires

Standard:

10.0/75 – 15.3 MPT – Multi-purpose tires for sand and gravel surface, woodland, roads and paths

Operating data

Shovel capacity acc. to SAE:	0.34 m ³
Track width:	1070 mm
Turning radius (outer shovel edge):	3242 mm
Tear-out force:	2430 daN
Torque:	2300 daN
Tipping load, straight:	1737 kg
Tipping load, articulated:	1535 kg
Lifting capacity at ground level:	2100 daN
Service weight:	2500 kg

Differing data for use of pallet forks
 (500 mm distance to center of gravity)*

Static tipping load, articulated:	1114 kg
Lifting capacity:	1600 daN
Payload 80% even surface**:	892 kg
Payload 60% uneven surface**:	669 kg

* Travel with load only permitted close to the ground.

** According to ISO 8313 and EN 474-3.

*** According to ISO 14396, EU RL97/68/EC.

AR 35 Super

Engine

Make: Perkins Diesel engine 403D-15T
Power***: set to 29.4 kW (40 hp) at 2800 min⁻¹

Drive

- Hydrostatic drive
- Acting on all 4 wheels
- 1st and 2nd hydraulic gear can be engaged under load, forward/backward travel also

Axles

Rigid axles with planetary reduction gears in wheel hubs. 45% - differential lock in front axle.

Brakes

Standard brake: Drum brake on front axle via cardan acting on all 4 wheels. Supplementary brake functions via inching pedal and hydrostatic drive acting on all 4 wheels.

Parking brake: Drum brake via funicular link acting on all 4 wheels with engine switched off.

Steering

- Fully hydraulic center pivot steering
- Steering angle of 40° to each side, ±12° angular movement at rear of vehicle
- Operating pressure of steering hydraulics 145 bar

Hydraulic system

- 3rd steering section for loading hydraulics mechanically controlled by ATLAS joystick, including float position
- Operating pressure 230 bar
Delivery of pump 39 l/min

Loading equipment

- Powerful and solid Z-kinematics with high tear-out force
- Hydraulic quick-change device
- Automatic shovel return to excavation position



Also available with cabin

Tires

Standard:

10.0/75 – 15.3 MPT – Multi-purpose tires for sand and gravel surface, woodland, roads and paths

Operating data

Shovel capacity acc. to SAE:	0.4 m ³
Track width:	1070 mm
Turning radius (outer shovel edge):	3242 mm
Tear-out force:	2430 daN
Torque:	2300 daN
Tipping load, straight:	1911 kg
Tipping load, articulated:	1700 kg
Lifting capacity at ground level:	2100 daN
Service weight:	2875 kg

Differing data for use of pallet forks

(500 mm distance to center of gravity)*

Static tipping load, articulated:	1422 kg
Lifting capacity:	1600 daN
Payload 80% even surface**:	1138 kg
Payload 60% uneven surface**:	853 kg

* Travel with load only permitted close to the ground.

** According to ISO 8313 and EN 474-3.

*** According to ISO 14396, EU RL97/68/EC.

AR 40

Engine

Make: Perkins Dieselmotor 403D-15T
 Power***: set to 29.4 kW (40 HP) at 2800 min⁻¹

Drive

- Hydrostatic drive
- Acting on all 4 wheels
- 1st und 2nd hydraulic gear can be engaged under load, forward/backward travel also

Axles

Rigid axles with planetary reduction gears in wheel hubs. 45 % - differential lock in front axle.

Brakes

Standard brake: Drum brake on front axle via cardan acting on all 4 wheels. Supplementary brake functions via inching pedal and hydrostatic drive acting on all 4 wheels.

Parking brake: Drum brake via funicular link acting on all 4 wheels with engine switched off.

Steering

- Fully hydraulic center pivot steering
- Steering angle of 40° to each side, ±12° angular movement at rear of vehicle
- Operating pressure of steering hydraulics 175 bar

Hydraulic system

- 3rd steering section for loading hydraulics mechanically controlled by ATLAS joystick, including float position
- Operating pressure 275 bar
- Delivery of pump 39 l/min

Loading equipment

- Powerful and solid Z-kinematics with high tear- out force
- Hydraulic quick-change device
- Parallel movement while using pallet forks
- Automatic shovel return to excavation position



Tires

Standard:

15.0/55 - 17 – Multi-purpose tires for earth moving machines, particularly surface friendly, gardening and landscaping

Special tires:

11.5/80 – 15.3 MPT– Multi-purpose tires for sand and gravel surface, woodland, roads and paths

Operating data

Shovel capacity to SAE:	0.5 m ³
Track width	1070 mm
Turning radius	
(outer shovel edge):	3150 mm
Tear out force:	3170 daN
Torque:	2500 daN
Tipping load, straight:	2719 kg
Tipping load, articulated:	2422 kg
Lifting capacity at ground level:	2340 daN
Service weight:	3300 kg

Differing data for use of pallet forks
 (500 mm distance to center of gravity)

* Static tipping load, articulated:	1875 kg
Lifting capacity:	1600 daN
Payload 80% even surface**:	1500 kg
Payload 60% uneven surface**:	1125 kg

* Specified tipping- and payloads are only valid for AR 40 with mounted ROPS cabine, tyres 15.0/55 - 17 and standard bucket

** According to ISO 8313 and EN 474-3.

*** According to ISO 14396, EU RL97/68/EC.

AR 50

Engine

Make: Deutz Diesel engine TD 2009 L04
Power***: set to 42 kW (57 hp) at 2200 min⁻¹

Drive

- Hydrostatic drive
- Acting on all 4 wheels
- 1st and 2nd hydraulic gear can be engaged under load, forward/backward travel also

Axles

Rigid axles with planetary reduction gears in wheel hubs, connecting electrically 100% - differential lock in front and rear axle.

Brakes

Standard brake: Multi-disc brake in oil bath acting on all 4 wheels. Supplementary brake functions via inching pedal an hydrostatic drive acting on all 4 wheels.

Parking brake: Parking brake as spring-loaded brake acting on all 4 wheels. In case of standstill of engine the spring-loaded brake is automatically re-activated.

Steering

- Fully hydraulic center pivot steering
- Steering angle 40° to each side, ±12° angular movement at rear of vehicle
- Operating pressure of steering hydraulics 175 bar

Hydraulic system

- 3rd steering section for loading hydraulics mechanically controlled by ATLAS joystick, including float position
- Operating pressure 230 bar
Delivery of pump 50 l/min

Loading equipment

- Powerful and solid parallel-kinematics
- Hydraulic quick-change device
- Parallel movement while using pallet forks
- Automatic shovel return to excavation position



Tires

Standard:

12.5 – 18 MPT– Multi-purpose tires for sand and gravel surfaces, woodland, roads and paths

Operating data

Shovel capacity acc. to SAE:	0.7 m ³
Track width:	1460 mm
Turning radius (outer shovel edge):	3977 mm
Tear-out force:	4000 daN
Torque:	3800 daN
Tipping load, straight:	3080 kg
Tipping load, articulated:	2710 kg
Lifting capacity at ground level:	3400 daN
Service weight:	3950 kg

Differing data for use of pallet forks
(500 mm distance to center of gravity)*

Static tipping load, straight and articulated:	2139 kg
Lifting capacity:	2700 daN
Payload 80% even surface**:	1711 kg
Payload 60% uneven surface**:	1283 kg

* Travel with load only permitted close to the ground.

** According to ISO 8313 and EN 474-3.

*** According to ISO 14396, EU RL97/68/EC.

AR 60

Engine

Make: Deutz Diesel engine TD 2009 L04
 Power***: set to 47.5 kW (65 hp) at 2500 min⁻¹

Drive

- Hydrostatic drive
- Acting on all 4 wheels
- 1st and 2nd hydraulic gear can be engaged under load, forward/backward travel also

Axles

Rigid axles with planetary reduction gears in wheel hubs, connecting electrically 100% - differential lock in front and rear axle.

Brakes

Standard brake: Multi-disc brake in oil bath acting on all 4 wheels. Supplementary brake functions via inching pedal an hydrostatic drive acting on all 4 wheels.

Parking brake: Parking brake as spring-loaded brake acting on all 4 wheels. In case of standstill of engine the spring-loaded brake is automatically re-activated.

Steering

- Fully hydraulic center pivot steering
- Steering angle of 40° to each side, ±12° angular movement at rear of vehicle
- Operation pressure of steering hydraulics 175 bar

Hydraulic system

- 3rd steering section for loading hydraulics mechanically controlled by ATLAS joystick, including float position
- Operating pressure 230 bar
- Delivery of pump 62.5 l/min

Loading equipment

- Powerful and solid Z-kinematics with high tear out force
- Hydraulic quick-change device
- Parallel movement while using pallet forks
- Automatic shovel return to excavation position



Tires

Standard:

12.5 – 18 MPT – Multi-purpose tires for sand and gravel surfaces, woodland, roads and path

Operating data

Shovel capacity acc. to SAE:	0.85 m ³
Track width:	1460 mm
Turning radius (outer shovel edge):	3977 mm
Tear-out force:	5160 daN
Torque:	4250 daNm
Tipping load, straight:	3625 kg
Tipping load, articulated:	3200 kg
Lifting capacity at ground level:	4650 daN
Service weight:	4650 kg

Differing data for use of pallet forks (500 mm distance to center of gravity)*

Static tipping load, straight and articulated:	2671 kg
Lifting capacity:	2845 daN
Payload 80% even surface**:	2137 kg
Payload 60% uneven surface**:	1602 kg

* Travel with load only permitted close to the ground.

** According to ISO 8313 and EN 474-3.

*** According to ISO 14396, EU RL97/68/EC.

AR 65 Super

Engine

Make: Deutz Diesel engine TD 2011 L04
Power***: set to 51.3 kW (70 hp) at 2200 min⁻¹

Drive

- Hydrostatic drive
- Acting on all 4 wheels
- 1st and 2nd hydraulic gear can be engaged under load, forward/backward travel also

Axles

Rigid axles with planetary reduction gears in wheel hubs, electrically connected 100% - differential lock in front and rear axle.

Brakes

Standard brake: Multi-disc brake in oil bath acting on all 4 wheels. Supplementary brake functions via inching pedal and hydrostatic drive acting on all 4 wheels

Parking brake: Parking brake as spring-loaded brake acting on all 4 wheels. In case of standstill of engine the spring-loaded brake is automatically re-activated.

Steering

- Fully hydraulic center pivot steering
- Steering angle 40° to each side, ±12° angular movement in rear of vehicle
- Operating pressure of steering hydraulics 175 bar

Hydraulic system

- Lowering brake dependent on load
 - 3rd hydraulic section serial
 - Loading hydraulics hydraulically pre-activated via ATLAS joystick including float position
 - Operating pressure 265 bar
- Delivery of pump 50.5 l/min

Loading equipment

- Powerful and solid Z-kinematics with high tear out force
- Hydraulic quick-change device
- Parallel movement while using pallet forks
- Automatic shovel return to excavation position



Tires

Standard:

12.5–20 MPT – Multi-purpose tires for sand and gravel surfaces, woodland, roads and paths

Operating data

Shovel capacity acc. to SAE:	0.8 - 1.0 m ³
Track width:	1510 mm
Turning radius (outer shovel edge):	4164 mm
Tear-out force:	5160 daN
Torque:	4100 daN
Tipping load, straight:	3800 kg
Tipping load, articulated:	3362 kg
Lifting capacity at ground level:	4590 daN
Service weight:	4800 kg

Differing data for use of pallet forks (500 mm distance to center of gravity)*

Static tipping load, straight and articulated:	2640 kg
Lifting capacity:	2845 daN
Payload 80% even surface**:	2112 kg
Payload 60% uneven surface**:	1584 kg

* Travel with load only permitted close to the ground.

** According to ISO 8313 and EN 474-3.

*** According to ISO 14396, EU RL97/68/EC.

AR 75

Engine

Make: Deutz Diesel engine TD 2011 L04
 Power***: set to 55 kW (75 hp) at 2400 min⁻¹

Drive

- Hydrostatic drive
- Acting on all 4 wheels
- 1st and 2nd hydraulic gears can be engaged under load, forward/backward travel also

Axles

Rigid axles with planetary reduction gears in wheel hubs, connecting electrically 100% differential lock for front and rear axle.

Brakes

Standard brake: Multi-disc brake running in oil bath acting on all 4 wheels. Supplementary brake functions via the inching pedal and hydrostatic drive acting on all 4 wheels.

Parking brake: Parking brake as spring-loaded brake acting on all 4 wheels. In case of standstill of engine the spring-loaded brake is automatically reactivated.

Steering

- Fully hydraulic center pivot steering.
- Steering angle 40° to each side, ±12° angular movement at rear of vehicle
- Operating pressure of steering hydraulics 175 bar

Hydraulic system

- Lowering brake dependent on load
- 3rd hydraulic section serial
- Loading hydraulics hydraulically pre-activated by ATLAS joystick, including float position
- Operating pressure 265 bar
 Delivery of pump 55 l/min

Loading equipment

- Powerful and solid Z-kinematics with high tear-out force
- Hydraulic quick-change device
- Parallel movement while using pallet forks
- Automatic shovel return to excavating position



Tires

Standard:

405/70 R 20 EM – Construction machine tires for clay, sand, gravel, asphalt, roads, gardening and landscaping

Operating data

Shovel capacity acc. to SAE:	1.0 m ³
Track width:	1640 mm
Turning radius (outer shovel edge):	4478 mm
Tear-out force:	6210 daN
Torque:	5250 daN
Tipping load, straight:	4065 kg
Tipping load, articulated:	3579 kg
Lifting capacity at ground level:	5510 daN
Service weight:	5600 kg

Differing data for use of pallet forks (500 mm distance to center of gravity)*

Static tipping load, straight and articulated:	2956 kg
Lifting capacity:	4392 daN
Payload 80% even surface**:	2364 kg
Payload 60% uneven surface**:	1773 kg

* Travel with load only permitted close to the ground.

** According to ISO 8313 and EN 474-3.

*** According to ISO 14396, EU RL97/68/EC.

AR 75 S

Engine

Make: Deutz Diesel engine TD 2011 L04
Power***: 55 kW (75 hp) at 2400 min⁻¹

Drive

- Hydrostatic drive
- Acting on all 4 wheels
- 1st and 2nd hydraulic gear can be engaged under load, forward/backward travel also

Axles

Rigid axle front, pendulum rear axle with planetary reduction gears in wheel hubs, electrically connected 100% - differential lock in front and rear axle. On swinging automatic blocking of pendulum axle.

Brakes

Standard brake: Multi-disc brake running in oil bath acting on all 4 wheels. Supplementary brake function via inching pedal and hydrostatic drive acting on all 4 wheels.

Parking brake: Parking brake as spring-loaded brake acting on all 4 wheels. In case of standstill of engine the spring-loaded brake is automatically re-activated.

Steering

- Fully hydraulic center pivot steering
- Steering angle 40° to each side, ±10° angular movement in rear vehicle (Swing axle)
- Operating pressure of steering hydraulics 175 bar

Hydraulic system

- Lowering brake dependent on load
- 3rd hydraulic section serial
- Loading hydraulics hydraulically pre-activated via ATLAS joystick including float position
- Operating pressure 230 bar
- Delivery of pump 61.5 l/min

Loading equipment

- Powerful solid and swingable parallel-kinematics, swiveling range up to 180°
- Hydraulic quick-change device
- Parallel movement while using pallet forks



Tires

Standard:

16/70 R-20 MPT 14 PR – Multi-purpose tires for earth moving machines, with good traction, self-cleaning and firm stability

Operating data

Shovel capacity acc. to SAE:	0.8 m ³
Track width:	1520 mm
Turning radius	
(outer shovel edge):	4226 mm
Tear-out force:	4000 daN
Torque:	4312 daN
Tipping load, straight:	3515 kg
Tipping load, articulated:	3100 kg
Lifting capacity at ground level:	3900 daN
Service weight:	6000 kg

Differing data for use of pallet forks
(500 mm distance to center of gravity)*

Static tipping load, straight	
and articulated:	2413 kg
Lifting capacity:	2710 daN
Payload 80%	
even surface**:	1930 kg
Payload 60%	
uneven surface**:	1448 kg

* Travel with load only permitted close to the ground.

** According to ISO 8313 and EN 474-3.

*** According to ISO 14396, EU RL97/68/EC.

AR 80

Engine

Make: Deutz Diesel engine TD 2011 L04
 Power***: 59.3 kW (81 hp) at 2600 min⁻¹

Drive

- Hydrostatic drive
- Acting on all 4 wheels
- 1st and 2nd hydraulic gear can be engaged under load, forward/backward travel also

Axles

Rigid axles with planetary reduction gears and wheel hubs, electrically connecting 100% - differential lock in front and rear axle.

Brakes

Standard brake: Multi-disc brake in oil bath acting on all 4 wheels. Supplementary brake functions via inching pedal and hydrostatic drive acting on all 4 wheels.

Parking brake: Parking brake as spring-loaded brake acting on all 4 wheels. In case of standstill of engine the spring-loaded brake is automatically re-activated.

Steering

- Fully hydraulic center pivot steering
- Steering angle 40° to each side, ±12° angular movement in rear of vehicle
- Operating pressure of steering hydraulics 175 bar

Hydraulic system

- Lowering brake dependent on load
- 3rd section serial
- Loading hydraulics hydraulically pre-activated via ATLAS joystick including float position
- Operating pressure 280 bar
 Delivery of pump 60 l/min

Loading equipment

- Powerful and solid Z-kinematics with high tear-out force
- Hydraulic quick-change device
- Parallel movement while using forks
- Automatic shovel return to excavation position



Tires

Standard:

405/70 R 20 EM – Construction machine tires for clay, sand, gravel, asphalt, roads, gardening and landscaping

Operating data

Shovel capacity acc. to SAE:	1.0 m ³
Track width:	1640 mm
Turning radius (outer shovel edge):	4478 mm
Tear-out force:	6800 daN
Torque:	5250 daN
Tipping load, straight:	4273 kg
Tipping load and articulated:	3762 kg
Lifting capacity at ground level:	6035 daN
Service weight:	5750 kg

Differing data for use of pallet forks (500 mm distance to center of gravity)*

Static tipping load, straight and articulated:	3102 kg
Lifting capacity:	4810 daN
Payload 80% even surface**:	2481 kg
Payload 60% uneven surface**:	1861 kg

* Travel with load only permitted close to the ground.

** According to ISO 8313 and EN 474-3.

*** According to ISO 14396, EU RL97/68/EC.

AR 85

Engine

Make: Deutz Diesel engine BF4M 2011 C
Power***: 71.2 kW (97 hp) at 2300 min⁻¹

Drive

- Hydrostatic drive
- Acting on all 4 wheels
- 1st and 2nd hydraulic gear can be engaged under load, forward/backward travel also

Axles

Rigid axles with planetary reduction gears in the wheel hubs, electrically connecting 100% - differential lock in front and rear axle.

Brakes

Standard brake: Multi-disc brake in oil bath acting on all 4 wheels. Supplementary brake function via inching pedal and hydrostatic drive acting on all 4 wheels.

Parking brake: Parking brake as spring-loaded brake acting on all 4 wheels. In case of standstill of engine the spring-loaded brake will be automatically re-activated.

Steering

- Fully hydraulic center pivot steering
- Steering angle 40° to each side, ±12° angular movement in rear of vehicle
- Operating pressure of steering hydraulics 175 bar

Hydraulic system

- Lowering brake dependent on load
- 3rd hydraulic section serial
- Loading hydraulics hydraulically pre-activated via ATLAS joystick including float position
- Operating pressure 225 bar
Delivery of pump 69 l/min

Loading equipment

- Powerful and solid Z-kinematics with high tear-out force
- Hydraulic quick-change device
- Parallel movement while using pallet forks
- Automatic shovel return to excavating position



Tires

Standard:

405/70 R 24 EM – Construction machine tires for clay, sand, gravel, asphalt, roads, gardening and landscaping

Operating data

Shovel capacity acc. to SAE:	1.3 m ³
Track width:	1640 mm
Turning radius (outer shovel edge):	4660 mm
Tear-out force:	6800 daN
Torque:	5700 daN
Tipping load, straight:	5408 kg
Tipping load, articulated:	4798 kg
Lifting capacity at ground level:	6000 daN
Service weight:	6700 kg

Differing data for use of pallet forks
(500 mm distance to center of gravity)*

Static tipping load, straight and articulated:	3925 kg
Lifting capacity:	5100 daN
Payload 80% even surface**:	3140 kg
Payload 60% uneven surface**:	2355 kg

* Travel with load only permitted close to the ground.

** According to ISO 8313 and EN 474-3.

*** According to ISO 14396, EU RL97/68/EC.

AR 95

Engine

Make: Deutz Diesel engine TCD 2012 L04
 Power***: 74.9 kW (102 hp) at 2200 min⁻¹

Drive

- Hydrostatic drive
- Acting on all 4 wheels.
- 1st and 2nd hydraulic gear can be engaged under load, forward/backward travel also

Axles

Rigid axles with planetary reduction gears in wheel hubs, electrically connecting 100% - differential lock in front and rear axle.

Brakes

Standard brake: Multi-disc brake in oil bath acting on all 4 wheels. Supplementary brake functions via inching pedal and hydrostatic drive acting on all 4 wheels.

Parking brake: Parking brake as spring-loaded brake acting on all 4 wheels. In case of standstill of engine the spring-loaded brake is automatically re-activated.

Steering

- Fully hydraulic center pivot steering
- Steering angle 40° to each side, ±12° angular movement in rear of vehicle
- Operating pressure of steering hydraulics 175 bar

Hydraulic system

- Lowering brake dependent on load
- 3rd hydraulic section serial
- Loading hydraulics hydraulically pre-activated via ATLAS joystick including float position
- Operating pressure bar 220 bar
 Delivery of pump 96.5 l/min

Loading equipment

- Powerful and solid Z-kinematics with high tear-out force
- Hydraulic quick-change device
- Parallel movement while using pallet forks
- Automatic shovel return to excavation position



Tires

Standard:

15.5-25 EM – Construction machine tires for relatively soft surface with high traction and good self-cleaning

Operating data

Shovel capacity acc. to SAE:	1.4 -1.6 m ³
Track width:	1775 mm
Turning radius	
(outer shovel edge):	5005 mm
Tear-out force:	7200 daN
Torque:	6900 daN
Tipping load, straight:	6572 kg
Tipping load, articulated:	5812 kg
Lifting capacity at ground level:	8200 daN
Service weight:	7900 kg

Differing data for use of pallet forks
 (500 mm distance to center of gravity)*

Static tipping load, straight and articulated:	4600 kg
Lifting capacity:	6800 daN
Payload 80%	
even surface**:	3680 kg
Payload 60%	
uneven surface**:	2760 kg

* Travel with load only permitted close to the ground.

** According to ISO 8313 and EN 474-3.

*** According to ISO 14396, EU RL97/68/EC.

AR 95 Super

Engine

Make: Deutz Diesel engine
TCD 2012 L04 2V (EMR****)
Power***: 92 kW (125 hp) at 2100 min⁻¹

Drive

- Hydrostatic drive
- Acting on all 4 wheels.
- 1st and 2nd hydraulic gear can be engaged under load, forward/backward travel also

Axles

Rigid axles with planetary reduction gears in wheel hubs, electrically connecting 100% - differential lock in front and axle.

Brakes

Standard brake: Multi-disc brake in oil bath acting on all 4 wheels. Supplementary brake function via inching pedal and hydrostatic drive acting on all 4 wheels.

Parking brake: Parking brake as spring-loaded brake acting on all 4 wheels. In case of standstill of engine the spring-loaded brake is automatically re-activated.

Steering

- Fully hydraulic center pivot steering
- Steering angle 40° to each side, ±12° angular movement in rear of vehicle
- Operating pressure of steering hydraulics 175 bar

Hydraulic system

- Lowering brake dependent on load
- 3rd hydraulic section serial
- Loading hydraulics hydraulically pre-activated via Atlas joystick including float position
- Operating pressure 240 bar
Delivery of pump 117.5 l/min

Loading equipment

- Powerful and solid Z-kinematics with high tear-out force
- Parallel movement while using pallet forks
- Automatic shovel return to excavation position



Tires

Standard :

15.5-25 EM – Construction machine tires for relatively soft surfaces with high traction and good self-cleaning

Operating data

Shovel capacity acc. to SAE:	1.4 - 1.6 m ³
Track width:	1775 mm
Turning radius (outer shovel edge):	5005 mm
Tear-out force:	7200 daN
Torque:	6900 daN
Tipping load, straight:	6700 kg
Tipping load, articulated:	5965 kg
Lifting capacity at ground level:	8200 daN
Service weight:	8100 kg

Differing data for use of pallet forks (500 mm distance to center of gravity)*

Static tipping load, straight and articulated:	4755 kg
Lifting capacity:	6800 daN
Payload 80% even surface**:	3804 kg
Payload 60% uneven surface**:	2853 kg

* Travel with load only permitted close to the ground.

** According to ISO 8313 and EN 474-3.

*** According to ISO 14396, EU RL97/68/EC.

**** Electronic control unit.

AGT

Engine

Make: Deutz Diesel engine TD 2011 L04i
 Power: 59.3 kW (81 hp) bei 2600 min⁻¹

Drive

- Hydrostatic drive with pressure limitation and closed circuit, affecting all 4 wheels
- Approved travel speeds for standard tires
 Working gear: 0 – 6.5 km/h
 Road gear: 0 – 20 km/h
 High-speed version (option) 40 km/h
- 1st and 2nd hydraulic gear shiftable under load, forward/backward travel shiftable under load
- Fine-tuning of control by means of the accelerator pedal and a separate inching pedal in order to ensure an ideal distribution of the hydraulic forces to the shearing and lifting forces

Axles

Rigid axles with planetary reduction gear in the wheel hubs, electrically activated part-time 100% differential lock in front and rear axles.

Brakes

Standard brake: Multiple disc brake in oil bath, affecting all 4 wheels. Additional braking function via inching pedal and hydrostatic drive.

Parking brake: Negative brake, spring-loaded, affecting all 4 wheels.

Steering system

- Fully hydraulic center pivot steering
- Steering angle on both sides 40 degrees
- Pivoting angle +/- 12 degrees at the rear end

Hydraulic system

- Working hydraulics: gear pump for loading and steering hydraulics
- 3rd section equipped as standard
- Operating pressure: 265 bar
 Capacity (discharge flow): 60 l/min
- Optional Pt.o. shaft (rear): closed circuit, hydrostatically operated, nominal rotation speed: 540 min⁻¹,



- hydraulically adjustable 3-point rear adapter (category II)
- Optional High-Flow hydraulics at the lifting unit, Operating pressure: 210 bar, capacity (discharge flow): 120 l/min

Loading equipment

- Powerful and solid Z-kinematics with high tear-out force
- Hydraulic quick release coupler
- Bucket automatically moves back to idle position

Tires

Standard:

12.5 – 20 MPT: Multi-purpose tires for sand and gravel, forest soil, roads and paths.
 Further tire types available on request

Operating data

Bucket capacity SAE:	0,8 m ³
Track width:	1510 mm
Turning radius outer edge of bucket:	4164 mm
Tear-out force:	5160 daN
Shearing force:	4150 daN
Tipping load – extended:	3662 kg
Tipping load – articulated:	3240 kg
Lifting force, at ground level:	4590 daN
Service weight:	4900 kg
Deviating data for use of pallet forks (load center distance 500 mm)	
Static tipping load articulated and extended:	2540 kg
Lifting force:	2845 daN
Load capacity 80% on level grounds:	2032 kg
Load capacity 60%, on uneven grounds:	1521 kg

Agriculture

Whether a bale grapppler, a manure and hay fork or a silage grapple, with the hydraulic quick-change attachment, it takes only a few seconds to turn an



ATLAS wheel loader into the perfect partner for specific agricultural operations. The roll-over bar can be turned down in areas with low headroom.



Landscaping

An ATLAS wheel loader is the right partner for all kinds of jobs, such as moving soil, cutting shrubs and hedges, paving or moving entire trees – and



its flexibility and precision ensure safe work while preventing tiredness in any situation.



Municipal enterprise

Equipped with a special anticorrosive and a hi-tip bucket, ATLAS wheel loaders get the job done even where other vehicles abandon the field – on expressways



in winter, for instance, where they free the road from snow and distribute salt in one step.



Recycling

In extreme situations, protective screens for cooling and combustion air serve to filter the intake air. Thanks to optional features such as pollutant control equip-

ment or specifically equipped cabins, an ATLAS wheel loader ensures excellent working conditions at all times, under all kinds of circumstances.



Civil engineering & road construction

No matter whether the challenge lies in transporting, (un)loading, excavating, leveling, scooping or backfilling – ATLAS wheel loaders go about doing the job



with excellent stability, extreme maneuverability, high payloads and exceptional shearing and lifting forces.



Narrow working zones

Since the lifting unit of the ATLAS swing loader can be turned to both sides of the vehicle up to a maximum angle of 90°, steering is not necessary to unload



material. The articulated joint provides for great maneuverability and makes sure that the front and the rear end always run in one track, thus going easy on the soil.



Main contract work

Due to their reliability and versatility, ATLAS wheel loaders – the compact, agile loaders as well as the big, powerful all-rounders – will easily convince you

that they are always the perfect choice, both for smaller construction sites and big building projects.



Handling material

Thanks to their large-volume buckets, our ATLAS wheel loader types AR 85 and AR 95 combine extreme capacity with great dumping heights to ensure

quick and trouble-free truck loading. The high-speed variant reaches a maximum speed of 40 km/h, which takes the wheel loader to the working site even faster.



Powerful and amazingly versatile: the AGT.

Reinforcement for the ATLAS team!

From now on, a new highlight that is both powerful and flexible will add to the versatility of our range of products: the AGT. Not only does this machine incorporate all the top-class features of an ATLAS wheel loader – it also serves as a heavy-duty tractive platform. Thus, wherever a reliable full-fledged wheel loader is needed, the AGT will do as excellent a job as all our renowned ATLAS wheel loaders. In addition to this, however; the AGT is equipped with powerful drive units which allow for the safe and trouble-free operation of attachments with high power requirements. It is this impressive flexibility which makes it a true all-rounder – particularly suited for fields of application like municipal enterprises, landscaping and gardening as well as agriculture and forestry.

A 59.3 kW/ 81 HP engine provides sufficient output for all kinds of mechanically or hydraulically operated attachments. Mechanically operated implements are attached to a optional hydraulically adjustable 3-point rear adapter (category II) and powered by means of a hydrostatically operated p.t.o. shaft.





The operation of hydraulic high-performance attachments at the lifting unit is made possible by the optional High-Flow hydraulics whose functioning is independent of the working hydraulics and which provides a hydraulic output of 120 liters per minute (rate of flow) at a working pressure of 210 bar.

Since the hydraulics of the lifting unit are load-independent of the power requirements of the attachments, the implement in question can be repositioned at all times.

Get a grip on any job – with ATLAS attachments.



ATLAS wheel loaders and ATLAS attachments are the ideal combination. Since state-of-the-art technology and the latest advancements in mechanical engineering and steel construction serve as the basis for their development and manufacturing, they offer maximum flexibility and safety. Tough steels and quality components guarantee cost-effective and efficient work for all operations. No matter whether you choose the standard version or a special variant: Our wheel loaders are the result of modern technology and longtime experience – a combination you can rely on.

- **High-quality, field-tested technology**
- **Safe functioning and handling**
- **Quick, trouble-free assembly and disassembly**
- **Exceptional ease of maintenance**

4-in-1 bucket



The right choice for leveling work, backfilling trenches or canals, transporting and loading bulk material.

Loading bucket



For jobs such as transporting bulk material (for instance, sand or broken stone), leveling of small and larger areas, digging away of mine workings or trenches, backfilling of trenches, excavations, etc., loading of trucks and trailers, horticulture and landscaping.

High tipping bucket



Serves to transport and load bulk material (sand, broken stone, etc.). Particularly suited for loading high trucks and trailers and stacking bulk material (e.g. de-icing salt).

Loading bucket with teeth



For jobs such as transporting bulk material (for instance, sand or broken stone), leveling of small and larger areas, digging away of mine workings or trenches, backfilling of trenches, excavations, etc., loading of trucks and trailers, horticulture and landscaping.

Side tipping bucket



The right attachment to transport and load bulk material (sand, broken stone, etc.) and to backfill trenches and canals on narrow construction sites.

Light material bucket with clamp



Choose this implement to transport and load bulky goods (brushwood, undergrowth, waste wood, etc.). The shape of the clamp and the side walls can be custom-made according to your individual needs.

Stone fork



The right choice for transporting cobblestone and bricks and for loading loose stones, uptaking pavements, debris or extremely cohesive earth (such as adobe) onto trucks and trailers.

Log and lumber fork



Designed to transport and load wood (separate logs or bundles) or other bulky objects.

5-tine scarifier



Scarify and loosen soils and paths with this attachment.

Pallet forks



Use pallet forks to transport and load piece goods. Particularly useful for stacking and great heights (e.g. for piling up pallets or bricks, high rack and scaffold loading).

Adjustable grapple



For jobs such as lifting and putting down building material, loading trailers and trucks, high rack and scaffold loading.

Polder forks (with/without gripper)



Serve to transport and load wood (separate logs or bundles) or other bulky objects; particularly recommended for forestry.

Dung fork



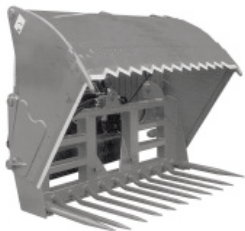
The right choice if you intend to transport and load manure, straw, hay, etc. A hydraulic gripper is available as an optional accessory.

Silage grapple



Use this implement to transport and load silage, pressed animal feed and similar materials.

Silage cutting grapple



Use this implement to transport and load silage, pressed animal feed and similar materials.

Crane arm (hydraulically swingable)



The right attachment for you if you intend to transport and load material to/from great heights, to place curbstone or canal parts or to lift or position railroad ties, etc.

Extended pushing blade



Pile up bulk material such as de-icing salt, fertilizer, corn, etc.

Leveling blade and snow plow



Remove snow from roads and surfaces or use this implement (provided that it is adequately equipped) for leveling.

V-type snow plow



The perfect choice for snow removal.

Front-end road sweeper



Sweep and clean roads, streets, paths and other surfaces with this attachment.

ATLAS tires: The best tread for excellent traction.



In order to enable our ATLAS wheel loaders to use their power to full capacity and apply it to all kinds of jobs and on all kinds of soil, they can be equipped with different tires for specific purposes. The following overview is just a small excerpt from the wide range of tires available for ATLAS vehicles.

- Specifically adjusted tread patterns
- High stability
- Excellent traction
- Enduring heavy-duty quality

Tire types at a glance.



XZSL

Reliable and robust multipurpose tire, suitable for use in areas such as recycling, industrial operation and on construction sites. Excellent operational performance and good traction.



EM20

Suited for operation on rather soft soils, its high traction, durability and good self-cleaning properties are among the advantages of this tire. An extra-tough tread pattern stabilizes and cushions the wheel loader on tough grounds.



MPT

Self-cleaning multipurpose tire with traction tread for use on sand and gravel, forest soil, roads and paths.



EM

This tire with high traction and good self-cleaning properties, whose performance is independent of the running direction, can be used both on soft and gravelly grounds. Its flat tread pattern profile provides for an even pressure distribution, great running smoothness and comfort on the road. It is suited for adobe, sand, gravel, roads, landscaping and horticulture.



XM

Wheel loader tire with enormous traction force for use on adobe, sand, gravel, farmland and grassland. The tread pattern with its angular cleats provides for extra protection of the tire flanks. Its surface features a handy, wear-resistant tread with excellent self-cleaning properties. Low tire pressures allow for operation on soils with low carrying capacities.

- Further tire types available on request
- Suitability of tire types depends on wheel loader type

ATLAS compaction rollers: The safest way to compact soil.



Wherever stable grounds and new paths need to be created, ATLAS compaction rollers take to the job like a duck to water: With service weights ranging from 2400 kg to 14000 kg and state-of-the-art technology, they are ready to meet your compaction challenges, such as the construction of modern traffic routes and industrial parks, of dams and dikes and of runways and railway lines.

- Innovative vibratory compaction technology
- Fine-tuning to individual soil features
- Computer-aided supervision and documentation

The technical highlights.

Front frame and drum

The entire front frame – with the exception of the crossbeams – is welded in order to ensure maximum stability. On wet and cohesive soils, the front and rear scrapers serve to remove accumulated material. The smooth drum can be converted into a pad foot drum by attaching an optional segment kit. The drum unit can easily be dismantled without a lifting tool. The front frame and the drum provide the static force.

Vibratory unit

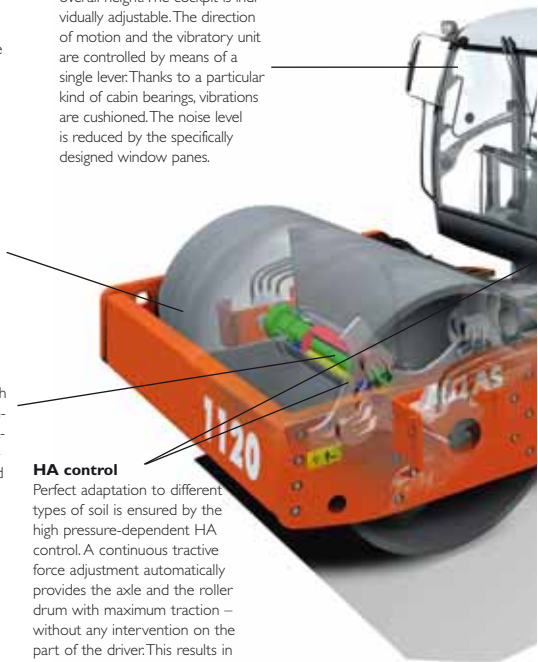
2-stage vibratory system with high compaction capacity. Two frequencies and amplitudes can be selected for surface and deep compaction. Big exterior bearings greased by an oil bath guarantee long inspection intervals.

Cabin

Spacious cabin with excellent circumferential visibility and low overall height. The cockpit is individually adjustable. The direction of motion and the vibratory unit are controlled by means of a single lever. Thanks to a particular kind of cabin bearings, vibrations are cushioned. The noise level is reduced by the specifically designed window panes.

HA control

Perfect adaptation to different types of soil is ensured by the high pressure-dependent HA control. A continuous tractive force adjustment automatically provides the axle and the roller drum with maximum traction – without any intervention on the part of the driver. This results in an automatic traction control and a noticeably improved climbing ability, especially in areas such as dike and embankment construction.





Safety

Excellent circumferential visibility, even in reverse gear, is established by a chamfered engine hood and a very compact design. ROPS cabin with individually adjustable operating elements.

Engine

Our water-cooled diesel engines offer substantial power reserves, high durability and low fuel consumption. Negligible noise emission values due to special engine bearings.

ECO Speed

This optional feature allows you to use the power of the hydraulic units that the compaction roller is equipped with to full capacity, in a particularly efficient way. Use ECO Speed to reduce the motor rotation speed by approx. 400 r.p.m., as compared to the nominal rotation speed, without any loss of power of the hydraulic system. While the vibration frequencies and the centrifugal forces remain constant, the noise exposure both for the driver and the environment as well as the fuel consumption are markedly reduced.

Maintenance

Easy-to-access service points and aggregates, thanks to an engine hood which can be opened widely. The maintenance-free articulated pendulum joint and the low-maintenance, enduring vibratory unit reduce the time and effort to be spent on maintenance.

Articulated pendulum joint

Robust, low-maintenance articulated pendulum joint. The front and the rear end run in a single track. Low center of gravity and excellent maneuverability.

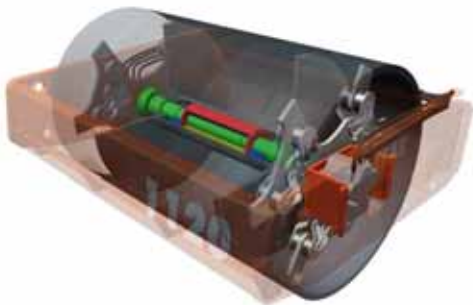
No-spin axle

A standard feature of all ATLAS compaction rollers. Permanently operative differential lock in order to ensure maximum off-road traction. Automatically released whenever the vehicle is driven on winding routes, at different rotational wheel speeds.

The highlights in detail.

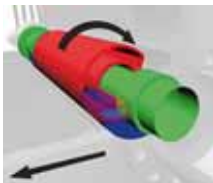
ATLAS vibratory system

The ATLAS vibratory system is fit to master all types of compaction work. The amount of energy required to achieve the desired degree of compaction can be set by means of two amplitudes and the automatic rotational speed adjustment: High centrifugal forces and a low frequency for deep compaction, lower centrifugal forces and high frequencies for surface compaction. Not only is the ATLAS vibratory system very robust, but easy to maintain as well: Big exterior bearings greased by an oil bath provide the basis for extra-long maintenance intervals. Thanks to the novel design, none of the bearings is hard to reach any more.

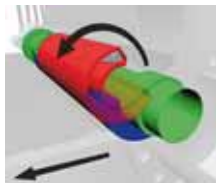


A powerful principle

The unbalanced mass is composed of a static and a variable part. The static part consists of a constant flyweight on the shaft while the variable part is created by a staggered housing with a mutable mass. Depending on the rotational direction of the vibratory shaft, the variable mass is added to or subtracted from the constant mass via the flyweight. Thus, a larger or smaller amplitude is created.



Large amplitude – low rotational speed. For the compaction of thick layers.



Small amplitude – high rotational speed. For the compaction of thin layers.



Articulated pendulum joint

All ATLAS compaction rollers are equipped with robust, low-maintenance articulated pendulum joints. They cause the front and the rear end to run in a single track and create a very low center of gravity. With an angle of 35 degrees and a pivoting angle of 12 degrees, an exceptional maneuverability is ensured.



No-spin axle

Thanks to its permanent differential lock, the no-spin axle provides for the best traction and maximum climbing power, which applies to all ATLAS compaction rollers at all times. Whenever different rotational speeds at the wheels are caused by operation on winding routes, the differential lock is automatically deactivated and will not be re-activated unless the wheels run synchronously again. The no-spin axle is a standard feature of all ATLAS compaction rollers.



Powerful diesel engines

The state-of-the-art low-emission diesel engines that are at work in all ATLAS compaction rollers are up to the standards set by everyday heavy-duty operation. Substantial power reserves and efficient water cooling serve to spare you trouble, even at extreme outside temperatures and on problematic grounds. Their durability and low fuel consumption account for their cost-effectiveness, their special engine bearings for a noticeable reduction of the noise development.

Maintenance of the hydraulics and the engine

In order to ensure quick and trouble-free maintenance, all relevant aggregates are easy to reach via the engine hood, which can be opened widely. Maintenance-free or low-maintenance components, such as the vibratory system or the articulated pendulum joint, serve to further reduce the time and effort to be spent on maintenance.



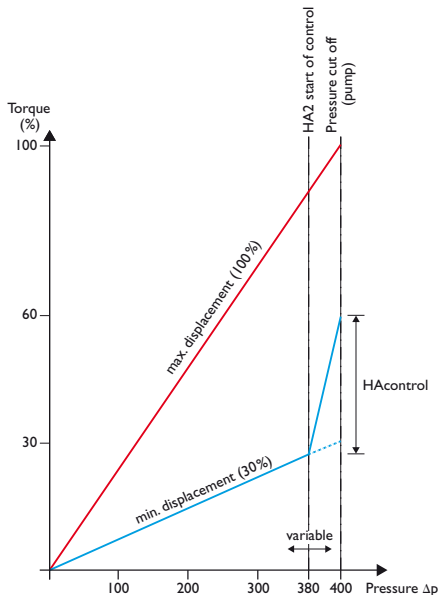
ROPS panoramic cabin

Both in forward and reverse gear; the ROPS panoramic cabin of our ATLAS compaction rollers provides for excellent circumferential visibility in any situation. Special cabin bearings serve to cushion vibrations. Thanks to their innovative design, the window panes reflect sound waves and lower the noise level. The steering column, whose inclination

is adjustable, and the ergonomic arrangement of the operating controls and compaction measurement devices ensure safe operation and help prevent tiredness. It goes without saying that the panoramic cabin can easily be accessed from both sides of the compaction roller. In addition, a swivel- ing seat can be installed as an optional feature.

The best traction – automatically.

In order to adapt the vehicle to different types of soil, the drive units of all ATLAS compaction rollers are equipped with a high pressure-dependent HA control. Thanks to the continuous adjustment of the tractive force, maximum traction both at the axle and the roller drum (for type 1070, this applies to the roller drum only) is at your disposal at all times. As this is an automatic feature, there is no need for the driver to intervene. In comparison with conventional 4-stage drive units, this system results in more efficient traction control and a noticeably improved climbing ability, especially in areas such as dike and embankment construction. The control is effectuated at the skid threshold, by robust hydraulic motors which can be oversteered, if necessary (Vgmax control). The system is exceptionally stable and works without electronic regulation, which is why it does not require parameterization.

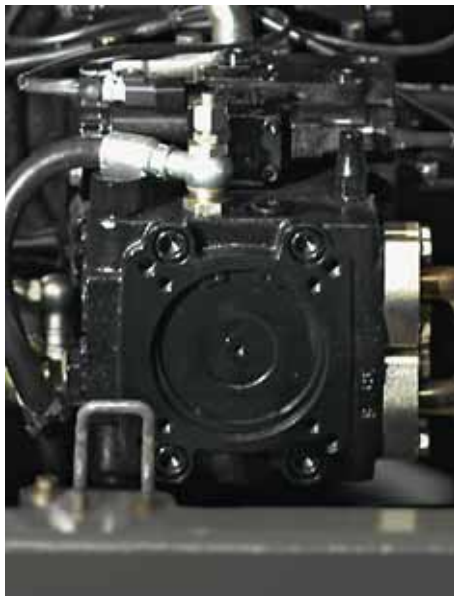


Perfect adaptation to all situations

The HA control serves to optimize the compaction roller's traction and its propulsion on all types of ground in the upper pressure range. Automatic, safe and without the need for the driver to intervene.

More power, less consumption.

ECO speed, an optional feature, allows for a particularly efficient exploitation of the power output of the hydraulic units. This system renders it possible to reduce the motor rotation speed by approx. 400 r.p.m., as compared to the nominal rotation speed, while all parameters regarding the machine's overall performance remain intact. The intelligent hydraulic system automatically ensures that its resources can still be used to full capacity and both the vibration frequencies and the centrifugal forces remain unaffected. Noticeable outcomes of this innovative, optimized use of the hydraulic capacities: Not only does the vehicle consume less fuel, but the sound level in the cabin is lowered and hence both the driver's and the environment's noise exposure reduced – without any output losses of the hydraulic system. It goes without saying that the driver can intervene and manually claim the full capacity of the drive unit at all times.



Markedly more economical, noticeably quieter

Thanks to ECO speed, the motor rotation speed can be lowered by approx. 400 r.p.m., compared to the nominal rotation speed, while the hydraulic system continues to dispose of its full capacity. While the noise level and the fuel consumption of the compaction roller are reduced, the vibration frequencies and the centrifugal forces remain unaffected.

Automatic compaction measurement

On many construction sites, the permanent supervision and documentation of the degree of compaction is obligatory. For this purpose, ATLAS offers a digital system which records and analyzes the entire compaction process. Without much expenditure of time, potential weak points are easily detected.

The system is operated by an acceleration sensor which is mounted to an unmuted part of the drum. The information gathered by the sensor is digitally transferred to a clearly laid out display in the cockpit. Since the portable device is attached to the drum by a quick-release fastener, it can be used on several machines.

The vibration behavior of the drum is recorded by the sensor and serves as the basis for the calculation of the relative compaction value, which is established as the drum is rolling down. Thus, the driver is permanently informed of the current values of all the relevant parameters, such as degree of compaction, amplitude, erratic behavior, frequency and velocity.

In addition to the parameters just mentioned, the device displays:

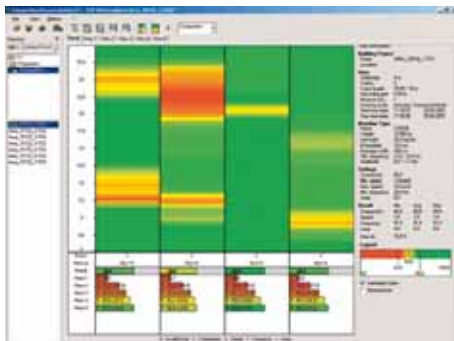
- The progression of compaction of the current track
- The progression of compaction of different tracks
- The precise position of the vehicle
- The average compaction value
- The increase of the degree of compaction after each pass





All corresponding data are recorded and can either be printed or transferred to a personal computer for subsequent analysis and evaluation. The memory capacity of the device permits the recording of:

- 99 surfaces
- 18 tracks per surface
- 8 passes per track
- A track distance of 30 to 800 meters
- A total work distance of 350 km



With the corresponding software, it takes just a few seconds to transfer the entire data recorded by the device to a personal computer, where they are instantly available for further processing.

The software offers a wide range of options for analysis and graphic representation of the data in order to ensure a precise and custom-tailored documentation. If required, the overall compaction result of a certain area with all the relevant data can be summarized and printed on a standard-sized (A 4) sheet of paper.

AW 240



Weight

Operating weight CECE	2450 kg
mittlere Achslast CECE	1225 kg

Compaction capacity

Static linear load	12.25 kg/cm
Amplitude	0.5 mm
Frequency I / II	53 / 61 HZ
Centrifugal force I / II	21.5 / 28 kN

Drum

Drum width	1000 mm
Drum diameter	750 mm
Drum thickness	12 mm

Drive

Velocity	0-9 km/h
Angle	±12°
Climbing capacity with / without vibration	30 / 35 %

Engine

Make	Deutz
Typ	D 2011 L2
Power	22.5 kW

AW 260



Weight

Operating weight CECE	2650 kg
mittlere Achslast CECE	1325 kg

Compaction capacity

Static linear load	11.04 kg/cm
Amplitude	0.5 mm
Frequency I / II	53 / 61 HZ
Centrifugal force I / II	25 / 34 kN

Drum

Drum width	1200 mm
Drum diameter	750 mm
Drum thickness	12 mm

Drive

Velocity	0-9 km/h
Angle	$\pm 12^\circ$
Climbing capacity with / without vibration	30 / 35%

Engine

Make	Deutz
Typ	D 2011 L2 i
Power	22.5 kW

AW 300



Weight

Operating weight CECE	3000 kg
mittlere Achslast CECE	1500 kg

Compaction capacity

Static linear load	12.00 kg/cm
Amplitude	0.5 mm
Frequency I / II	52 / 58 HZ
Centrifugal force I / II	29 / 37 kN

Drum

Drum width	1250 mm
Drum diameter	750 mm
Drum thickness	12 mm

Drive

Velocity	0-9 km/h
Angle	±12°
Climbing capacity with / without vibration	30 / 35%

Engine

Make	Deutz
Type	D 2011 L2 i
Power	22.5 kW

AW I070 / AW I070 PD*



Weight

Operating weight CECE	7100 kg / 7250 kg
Axle load, front	3800 kg / 4200 kg
Axle load, rear	3300 kg / 3150 kg

Compaction capacity

Static linear load	22.40 kg/cm
Amplitude large / small	1.6/0.7 mm / 1.6/0.7 mm
Frequency at large / small amplitude	30/40 Hz / 30/40 Hz
Centrifugal force at large / small amplitude	120/90 kN / 120/90 kN

Drum

Drum width	1700 mm / 1700 mm
Drum diameter	1250 mm / 1140 mm
Drum thickness	20 mm / 15 mm

Drive

Velocity	0-10 km/h / 0-10 km/h
with HD-Drive	0-12 km/h
Angle	$\pm 12^\circ$ / $\pm 12^\circ$
Climbing capacity with / without vibration	45 / 50% / 45 / 50%
Tires	16.9-24 / 16.9-24 TR

Engine

Make	Perkins / Perkins
Type	I104D-44T
Power	62 kW

PD* = pad foot drum

AW 1110 / AW 110 PD*

**Weight**

Operating weight CECE	11200 kg / 11500 kg
Axle load, front	6100 kg / 6400 kg
Axle load, rear	5100 kg / 5100 kg

Compaction capacity

Static linear load	29,00 kg/cm
Amplitude large / small	1,8 / 0,8 mm / 1,8 / 0,8 mm
Frequency at large / small amplitude	30 / 38 HZ / 30 / 38 HZ
Centrifugal force at large / small amplitude	220 / 150 kN / 220 / 150 kN

Drum

Drum width	2100 mm / 2100 mm
Drum diameter	1500 mm / 1390 mm
Drum thickness	25 mm / 25 mm

Drive

Velocity	0-11,5 km/h / 0-11,5 km/h
Angle	±12° / ± 12°
Climbing capacity with / without vibration	43 / 48% / 43 / 48 %
Tires	23,1-26 / 23,1-26

Engine

Make	Deutz / Deutz
Type	TCD 2012 L4 / TCD 2012 L4
Power	96 kW / 96 kW

AW 1120 / AW 1120 PD*



Weight

Operating weight CECE	12000 kg / 12300 kg
Axle load, front	6900 kg / 7200 kg
Axle load, rear	5100 kg / 5100 kg

Compaction capacity

Static linear load	32.80 kg/cm
Amplitude large / small	1.8/0.6 mm / 1.8/0.6 mm
Frequency at large / small amplitude	30/40 Hz / 30/40 Hz
Centrifugal force at large / small amplitude	240/140 kN / 240/140 kN

Drum

Drum width	2100 mm / 2100 mm
Drum diameter	1500 mm / 1390 mm
Drum thickness	30 mm / 30 mm

Drive

Velocity	0-11.5 km/h / 0-11.5 km/h
Angle	±12° / ±12°
Climbing capacity with / without vibration	45/48% / 48/52%
Tires	23.1-26 / 23.1-26 TR

Engine

Make	Deutz / Deutz
Type	TCD 2012 L4 / TCD 2012 L4
Power	96 kW / 96 kW

PD* = pad foot drum

AW 1130 / AW 1130 PD*

**Weight**

Operating weight CECE	12900 kg / 13200 kg
Axle load, front	7000 kg / 7300 kg
Axle load, rear	5900 kg / 5900 kg

Compaction capacity

Static linear load	33.30 kg/cm
Amplitude large / small	1.8/0.9 mm / 1.8/0.9 mm
Frequency at large / small amplitude	30/38 Hz / 30/38 Hz
Centrifugal force at large / small amplitude	260/190 kN / 260/190 kN

Drum

Drum width	2100 mm / 2100 mm
Drum diameter	1500 mm / 1390 mm
Drum thickness	30 mm / 30 mm

Drive

Velocity	0-12.5 km/h / 0-12.5 km/h
Angle	±12° / ±12°
Climbing capacity with / without vibration	41 / 46% / 41 / 46%
Tires	23.1-26 / 23.1-26 TR

Engine

Make	Deutz / Deutz
Type	TCD 2012 L4 / TCD 2012 L4
Power	103 kW / 103 kW

PD* = pad foot drum

AW 1140 / AW 1140 PD*



Weight

Operating weight CECE	13800 kg / 14200 kg
Axle load, front	8000 kg / 8400 kg
Axle load, rear	5800 kg / 5800 kg

Compaction capacity

Static linear load	38.00 kg/cm
Amplitude large / small	1.9/0.7 mm / 1.9/0.7 mm
Frequency at large / small amplitude	30/40 Hz / 30/40 Hz
Centrifugal force at large / small amplitude	280/180 kN / 280/180 kN

Drum

Drum width	2100 mm / 2100 mm
Drum diameter	1500 mm / 1390 mm
Drum thickness	35 mm / 30 mm

Drive

Velocity	0-12.5 km/h / 0-12.5 km/h
Angle	±12° / ±12°
Climbing capacity with / without vibration	40/45% / 40/45%
Tires	23.1-26 / 23.1-26 TR

Engine

Make	Deutz / Deutz
Type	TCD 2012 L4 / TCD 2012 L4
Power	103 kW / 103 kW

PD* = pad foot drum

Powerful and reliable – anywhere they go.

ATLAS compaction rollers can be customized and adapted to different fields of application by equipping them with a variety of special drums. For road construction jobs such as compacting gravel

and road beds or operation in landscaping and horticulture on sand and topsoil, our powerful engines and the versatile ATLAS vibratory system ensure fast, cost-effective work and excellent, presentable results.



For your notes.

ATLAS Teamwork:

Subject to technical alterations.

01/2010

ATLAS WEYHAUSEN GmbH
Maschinenfabrik
Visbeker Straße 35
D-27793 Wildeshausen
Telephone +49 (0)44 31/981-0
Fax +49 (0)44 31/981-225
www.radlader.com

ATLAS
WEYHAUSEN